

OPTIONAL ACCESSORIES

DIGITAL CAMERA ADAPTERS



ADC25

Model ADC25
DIGITAL
CAMERA ADAPTER
(for small-sized camera)



Z1017

Model Z1017
DIGITAL
CAMERA ADAPTER
(for small-sized camera)

TV CAMERA ADAPTER / T-MOUNT ADAPTERS



DG

Model DG
ADAPTER FOR SLR
DIGITAL STILL CAMERA
(to be used with T-mount adapter)

T-MOUNT ADAPTERS

Model T-PENTAX/K

T-NIKON

T-CANON/EOS

T-OLYMPUS/OM

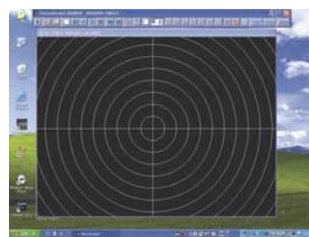
T-SONY



Model TVA-45
TV CAMERA ADAPTER
(for C-mount CCD/CMOS camera)

MICROSCOPE CAMERA

CMOS cameras with USB interface are optionally prepared easily to convert an analog scope into "Digital Microscope". XR9530E is provided with "CartonScale2" measuring software making it possible to make a measurement of live image before capture. HDCE series include "ScopelImage" image processing software for simple measurement.



"CartonScale2"



XR9530E



HDCE-20C



HDCE-X3



HDCE-X5

Models	XR9530E	HDCE-20C	HDCE-X3	HDCE-X5
Image Sensor	1/3" CMOS	1/2.5" CMOS	1/2.5" CMOS	1/2.5" CMOS
Number of Pixel	1,3M (1280x1024)	2M (1600x1200)	3M (2048x1536)	5M (2592x1944)
Digital Output	24-bit (color)	24-bit (color)	24-bit (color)	24-bit (color)
Frame Rate	1280x1024 15 f/s 640x480 60 f/s	1600x1200 6 f/s 1024x768 10 f/s	2048x1536 4 f/s 1024x768 10 f/s	2592x1944 2.5 f/s 1024x768 10 f/s
Sensitivity	1.0V/lux-sec	0.53V/lux-sec	0.53V/lux-sec	0.53V/lux-sec
S/N Ratio	54dB	40dB	40dB	40dB
Exposure	Auto/Manual			
White Balance	Auto/Manual			
Mount Type	C mount (without relay lens) *)TVA-45 adapter is needed.	C mount with relay lens (to be inserted into eyepiece tube without adapter)		
Interface	USB2.0			
Standard Software	"CartonScale2" Measuring Software	"ScopelImage9.0" Image Processing Software		
Working Temperature	0-40°C			
OS	Windows XP/7 32-bit		Windows 2000/XP/Vista/Win 7 32bit or 64bit	